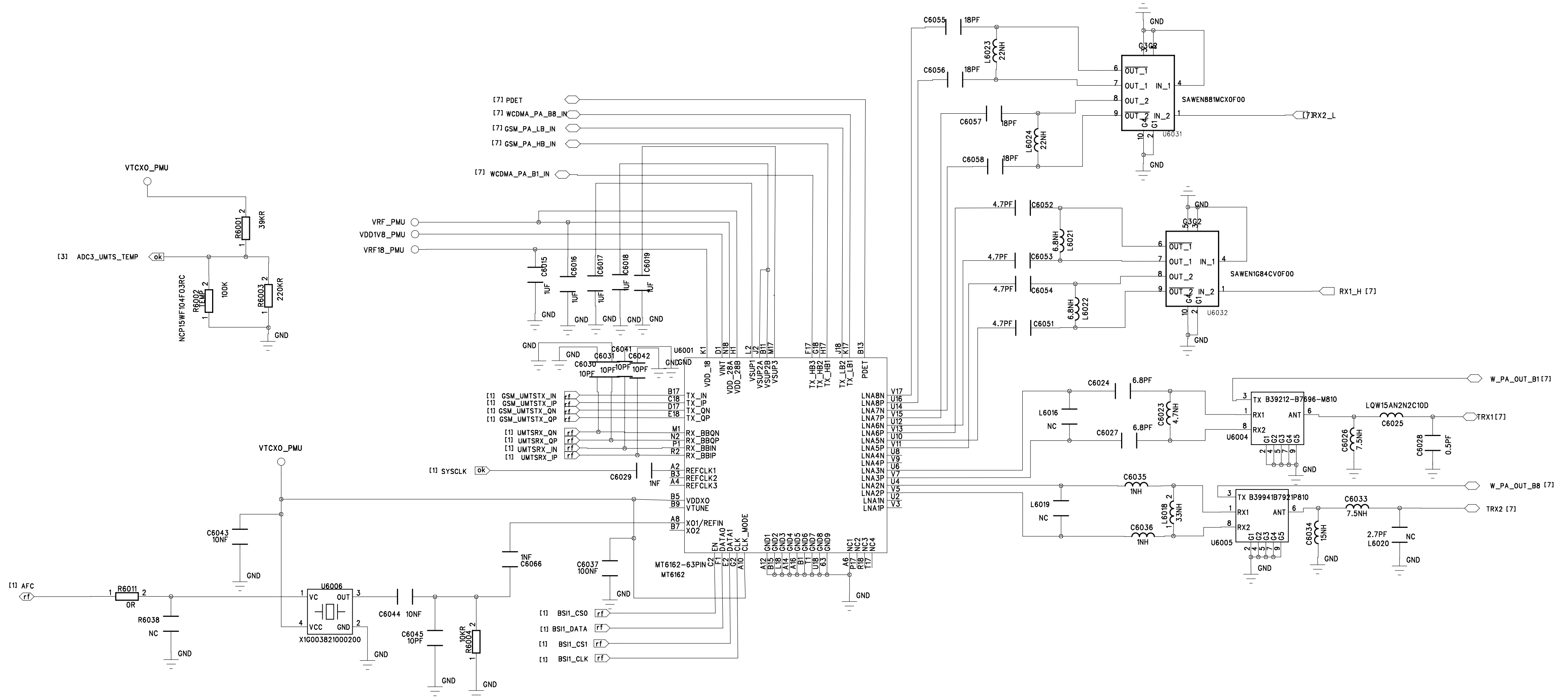




		COMPANY: SIMCOM			
		TITLE: Z1			
DRAWN: WangJian	DATED: 2012.1.12	CODE: Code	SIZE: A2	DRAWING NO: POWER	REV: V1.00
CHECKED: <Checked By>	DATED: <Checked Date>				
QUALITY CONTROL: <QC By>	DATED: 2010				
RELEASED: <Released By>	DATED: 2010.12				
		SCALE: <Scale>			SHEET: 3 OF 12

REVISION RECORD			
LTR	ECO NO:	APPROVED:	DATE:

MT6162



DRAWN: Wang Yanfeng		DATED: 2012.1.12		Z1			
CHECKED: <Checked By>	DATED: <Checked Date>	CODE: Code	SIZE: A2			DRAWING NO: RF TRX	REV: V1.00
QUALITY CONTROL: <QC By>	DATED: 2010						
RELEASED: <Released By>	DATED: 2010.12	SCALE: <Scale>					
					SHEET: 6 OF 12		

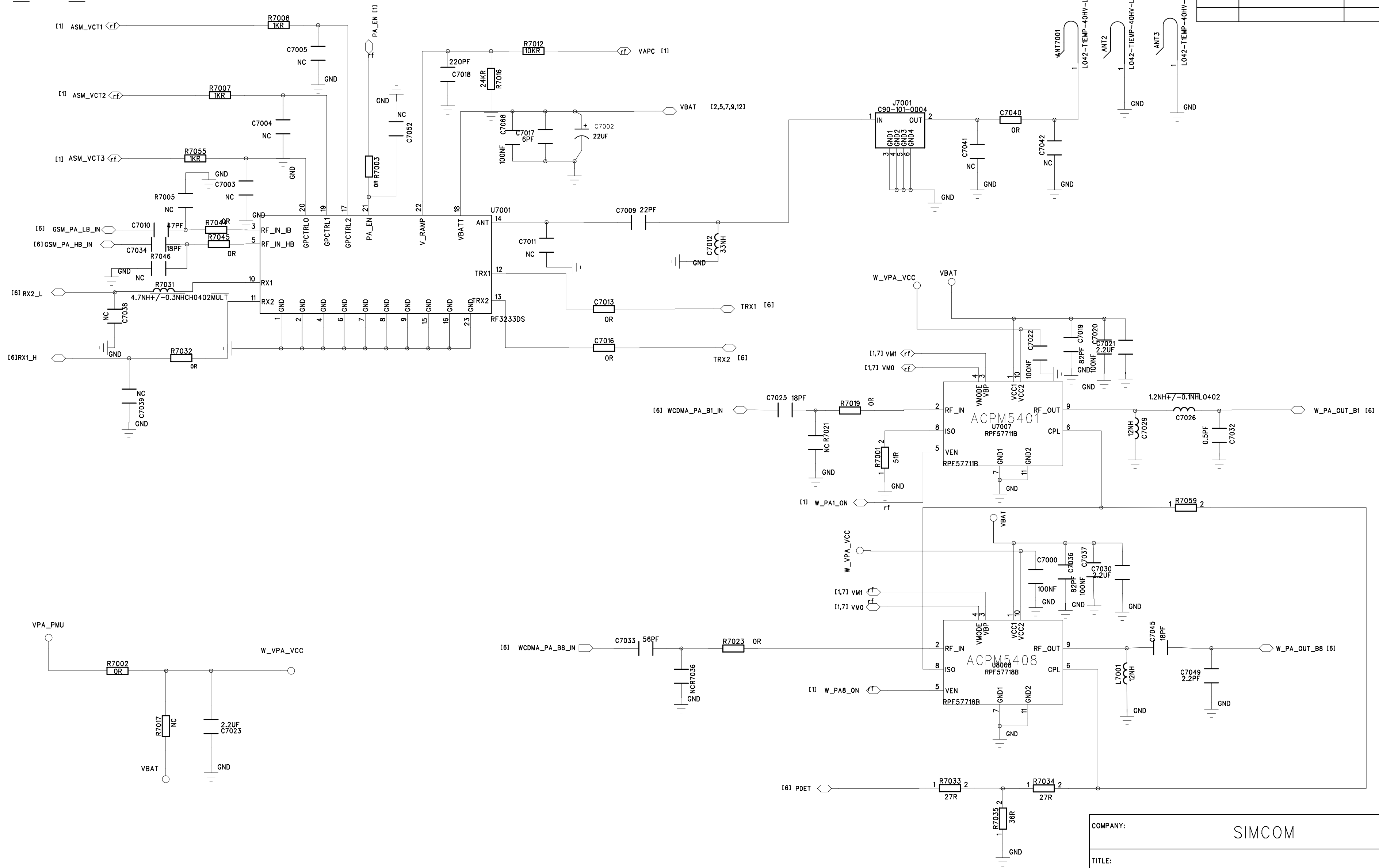
COMPANY: SIMCOM

TITLE:	71	A
--------	----	---

ate>	CODE:	SIZE:	DRAWING NO:	REV:
	Code	A2	RF TRX	V1.00

SCALE: <Scale> SHEET: 6 OF 12

RF_TX_ASM



REVISION RECORD			
LTR	ECO NO:	APPROVED:	DATE:

COMPANY: SIMCOM			
TITLE: Z1			
e>	CODE: Code	SIZE: A2	DRAWING NO: RF PA
			REV: V1.00
SCALE: <Scale>			SHEET: 7 OF 12

6

5

4

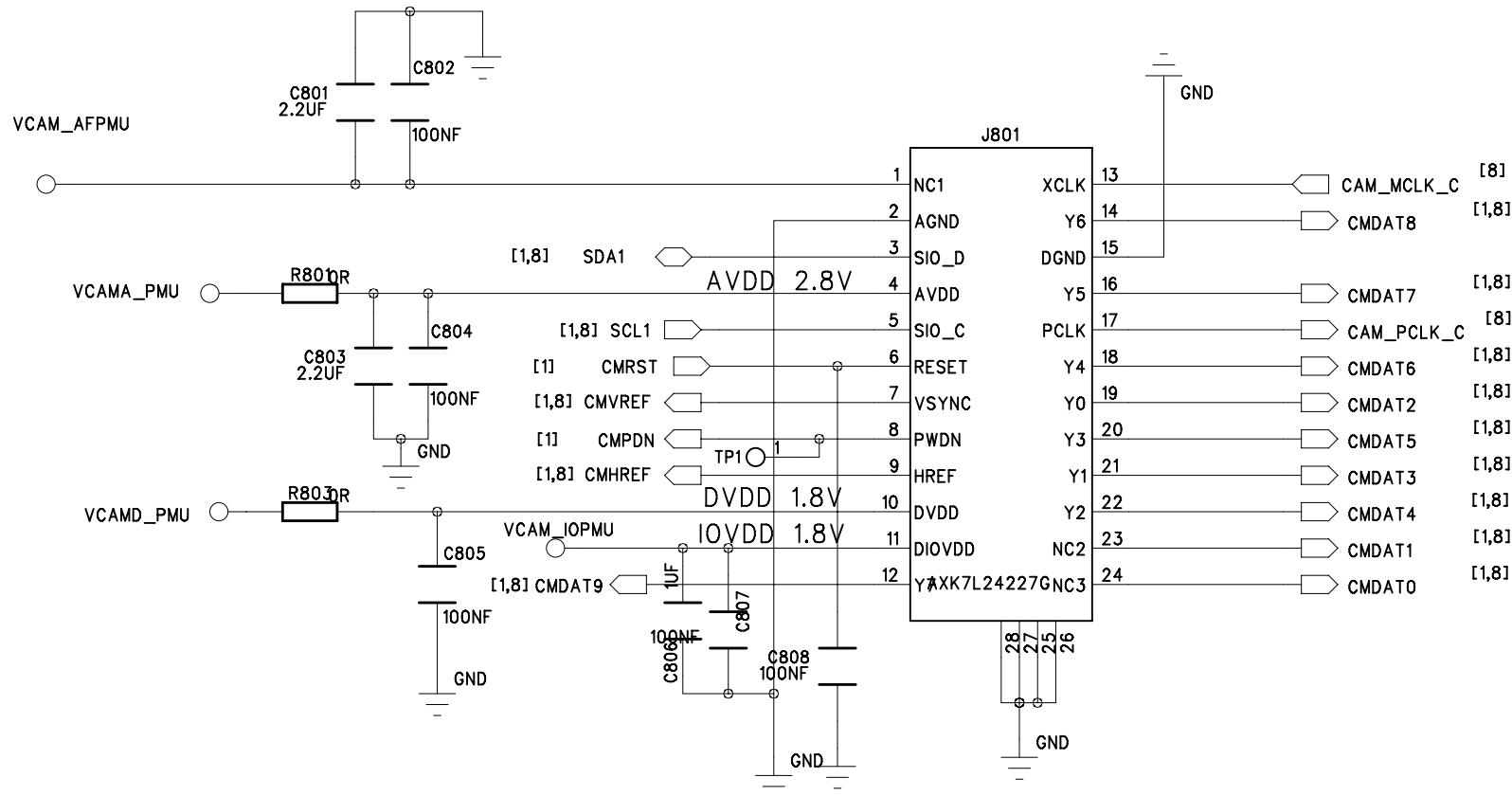
3

2

1

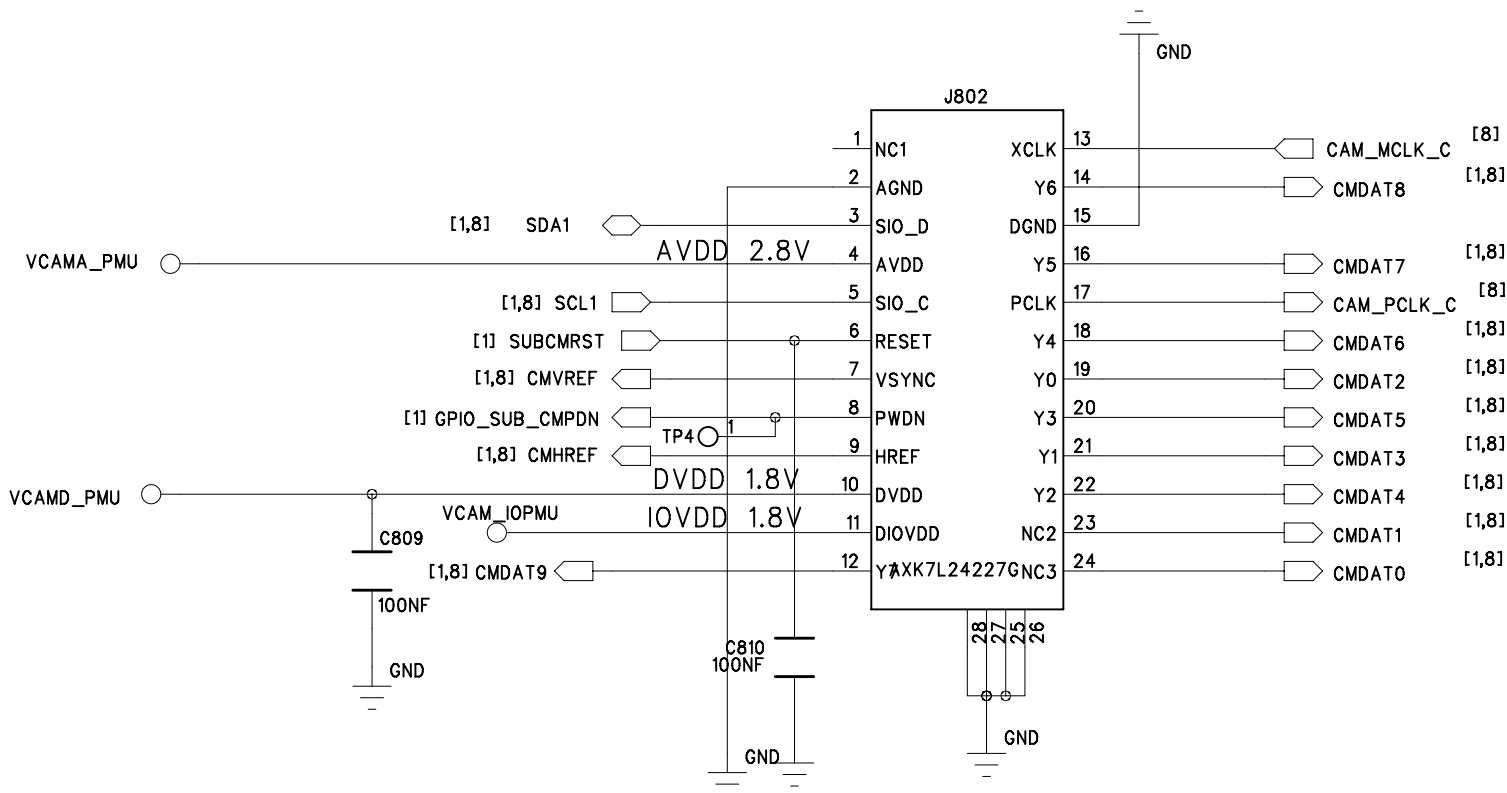
Main Camera

VCAMA_6573: 250mA 1.5/1.8/2.5/2.8(2.8V)
VCAMA2_6573: 100mA 1.5/1.8/2.5/2.8(2.8V)
VCAMD_6573: 100mA 1.3/1.5/1.8/2.5/2.8/3.0/3.3(1.8V)
VCAMD2_6573: 100mA 1.3/1.5/1.8/2.5/2.8/3.0/3.3(1.8V)

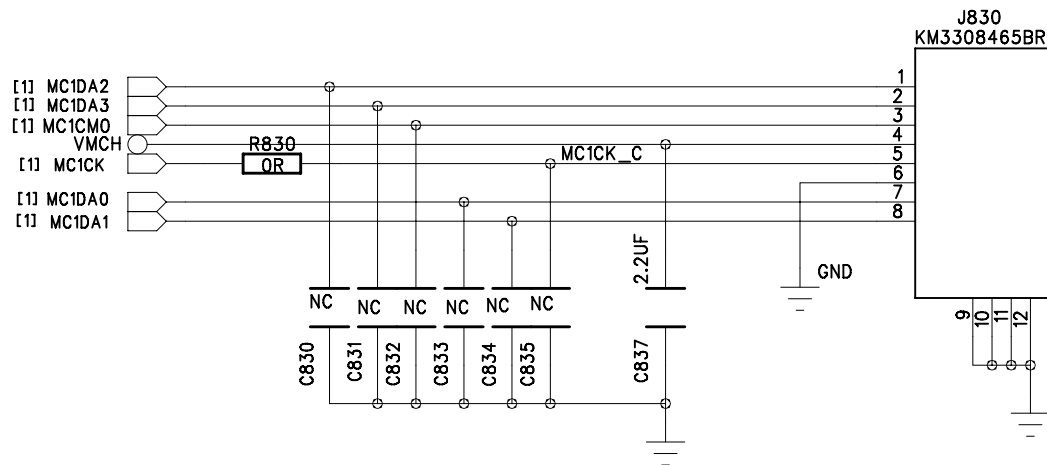


R805 place close to Camera
R806 place close to 6573

Sub Camera

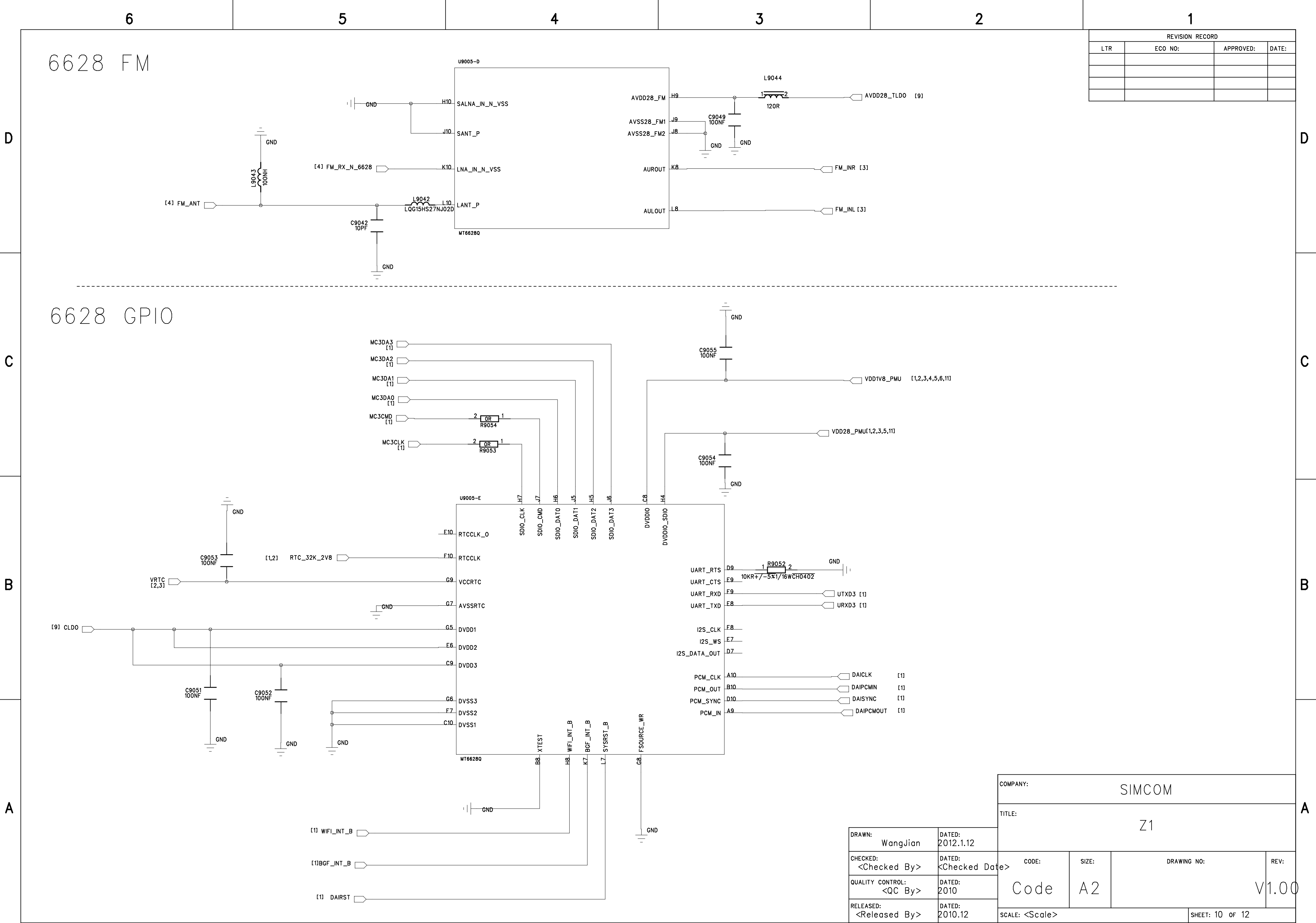


TFlash card

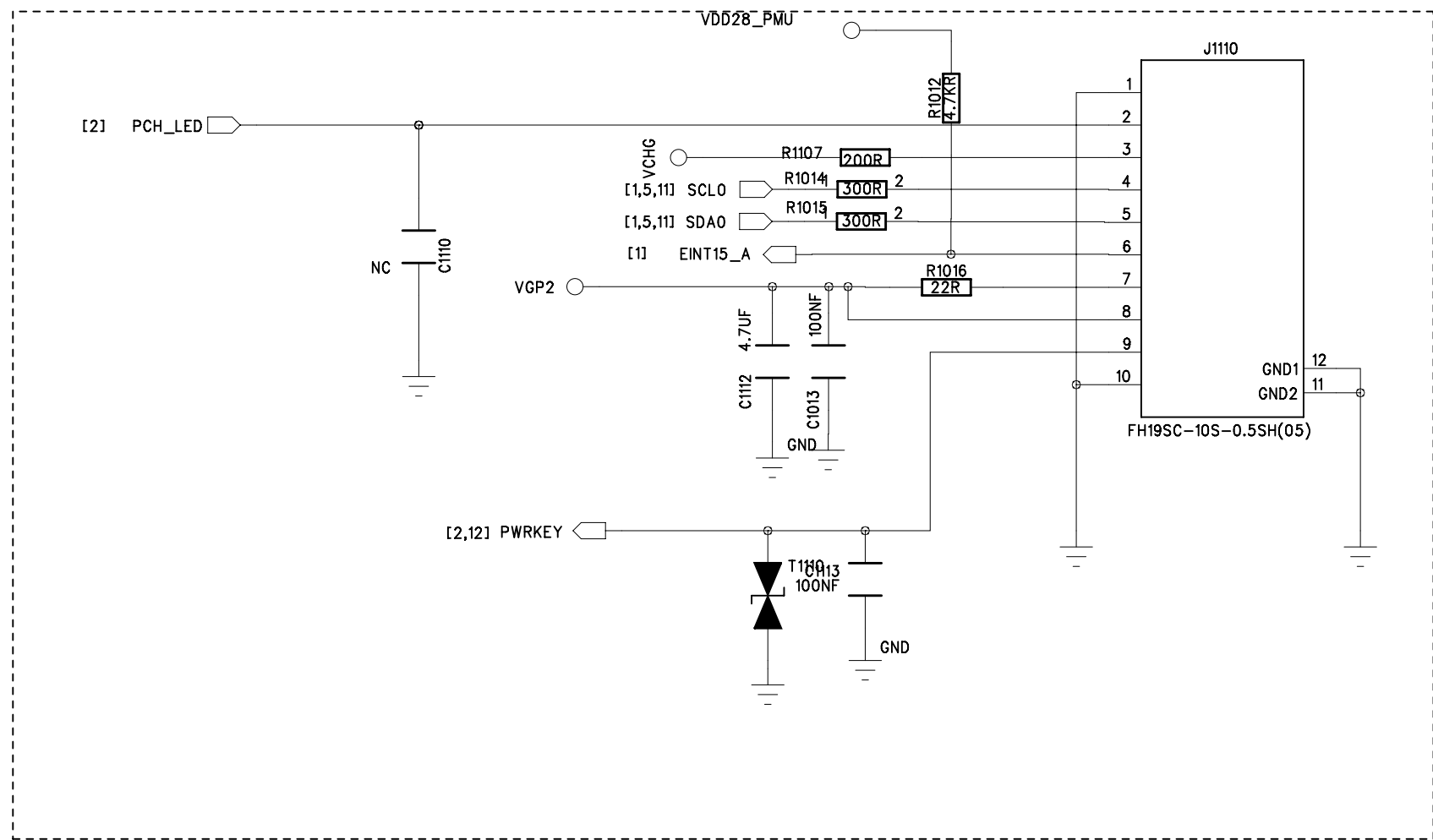
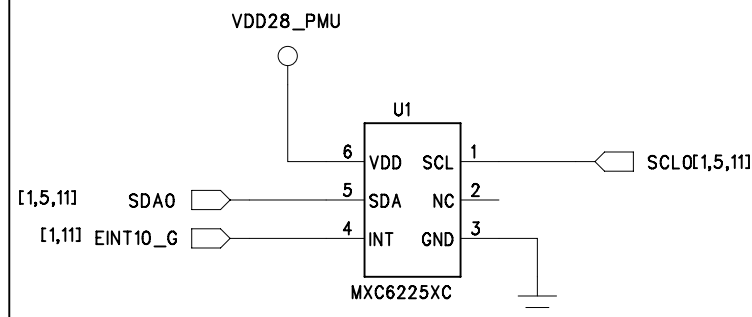
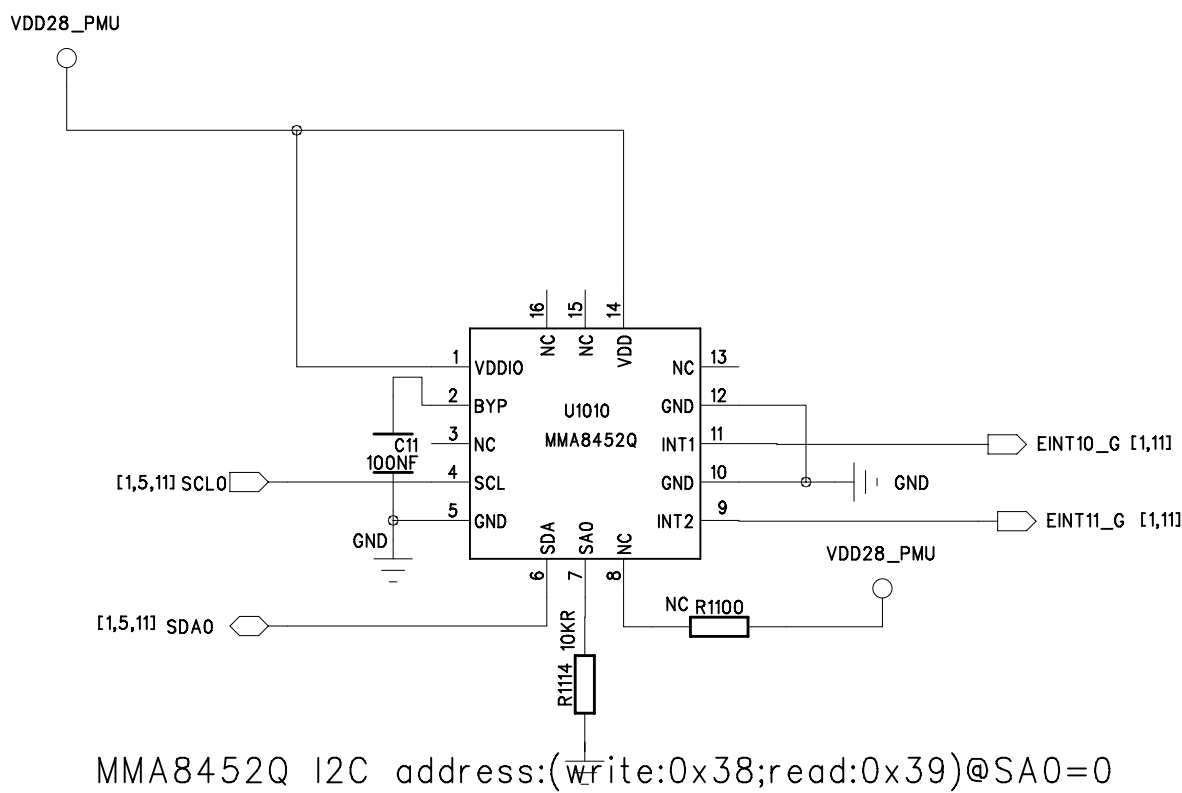
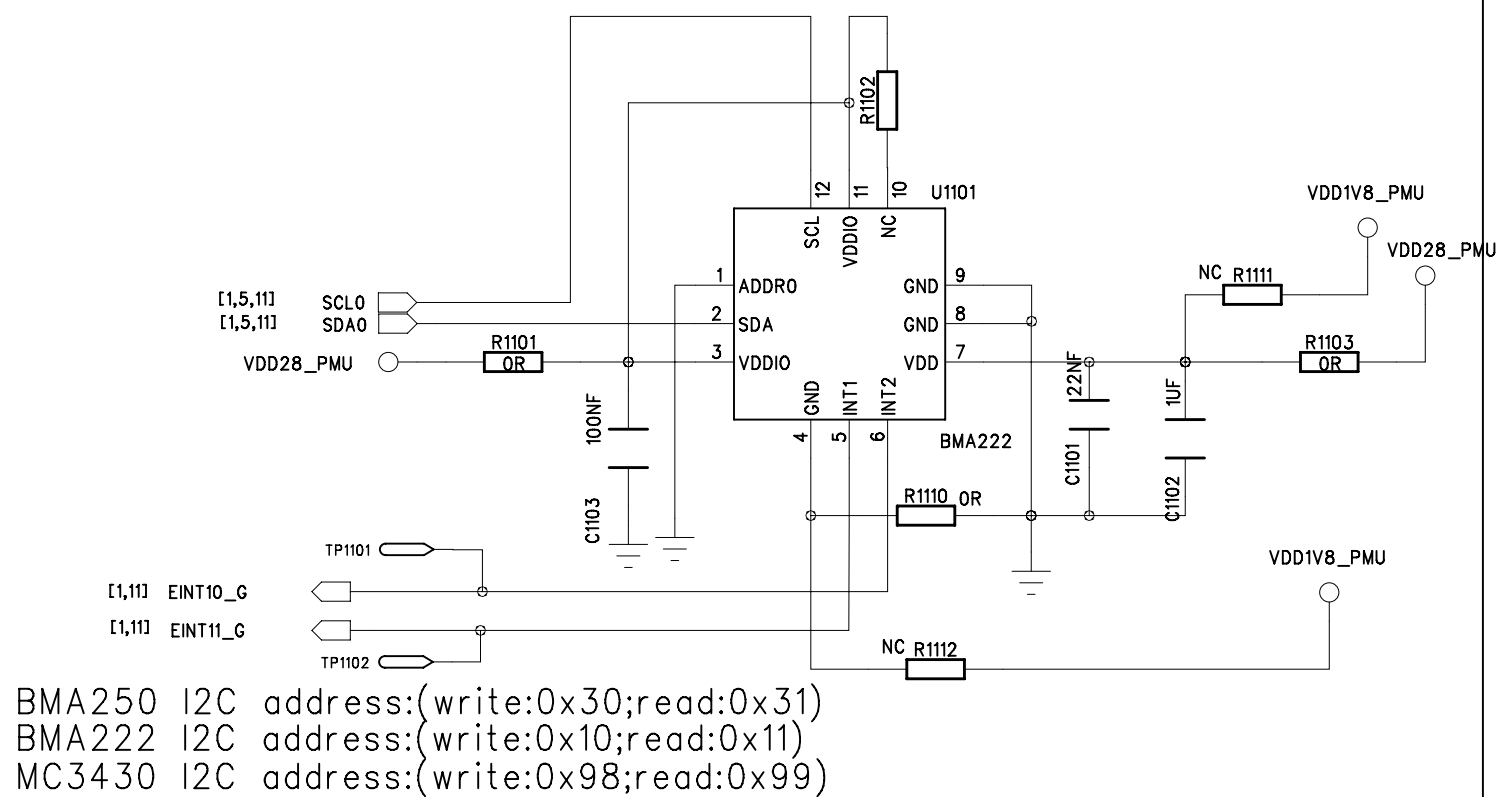


REVISION RECORD			
LTR	ECO NO:	APPROVED:	DATE:

COMPANY:				SIMCOM			
TITLE:						Z1	
e> CODE:		SIZE:		DRAWING NO:		REV:	
Code		A2		Camera & TF		V1.00	
SCALE: <Scale>				SHEET: 8		OF 12	



G SENSOR



COMPANY: SIMCOM			
TITLE: Z1			
DRAWN: WangJian	DATED: 2012.1.12	CODE: Code	SIZE: A2
CHECKED: <Checked By>	DATED: <Checked Date>	DRAWING NO: Sensor	REV: V1.00
QUALITY CONTROL: <QC By>	DATED: 2010	SCALE: <Scale>	
RELEASED: <Released By>	DATED: 2010.12	SHEET: 11 of 12	

6

5

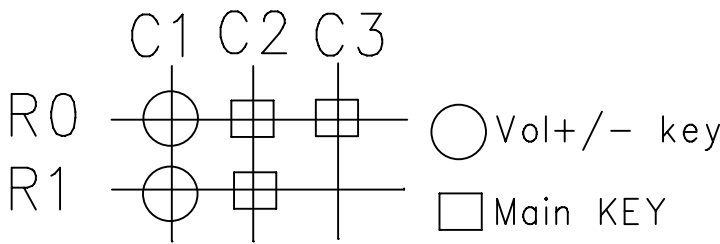
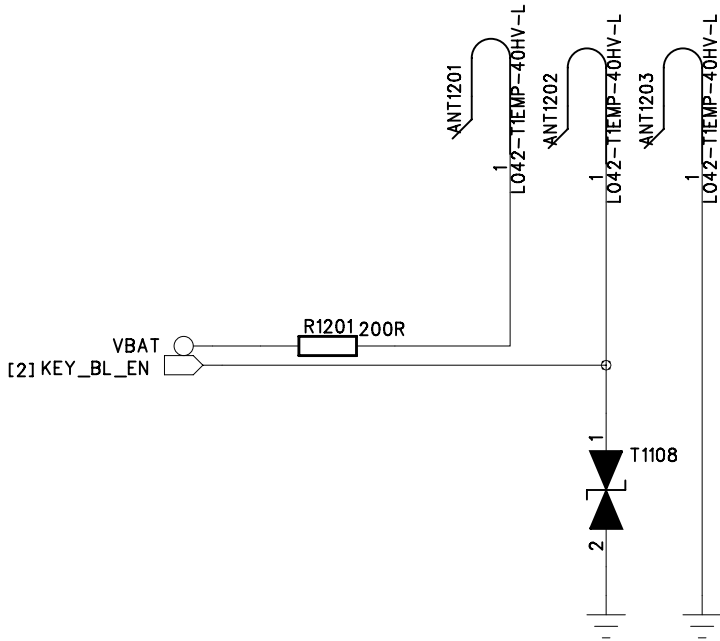
4

3

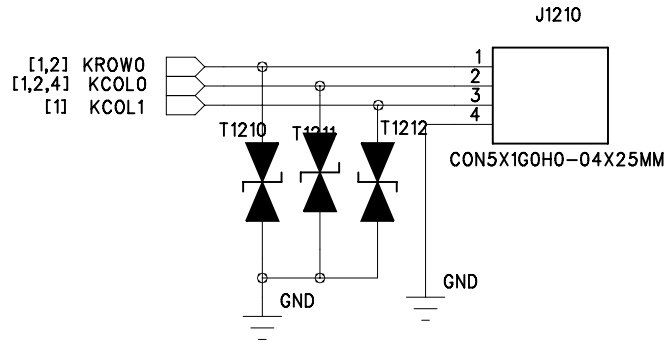
2

1

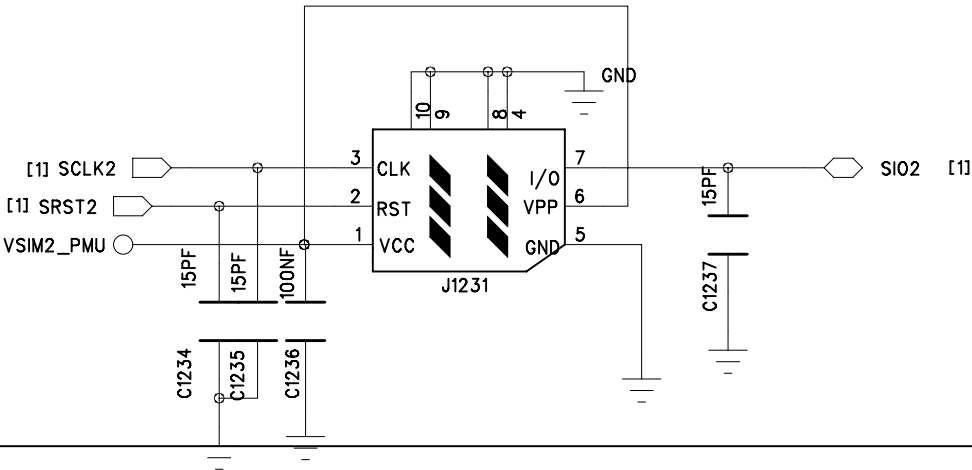
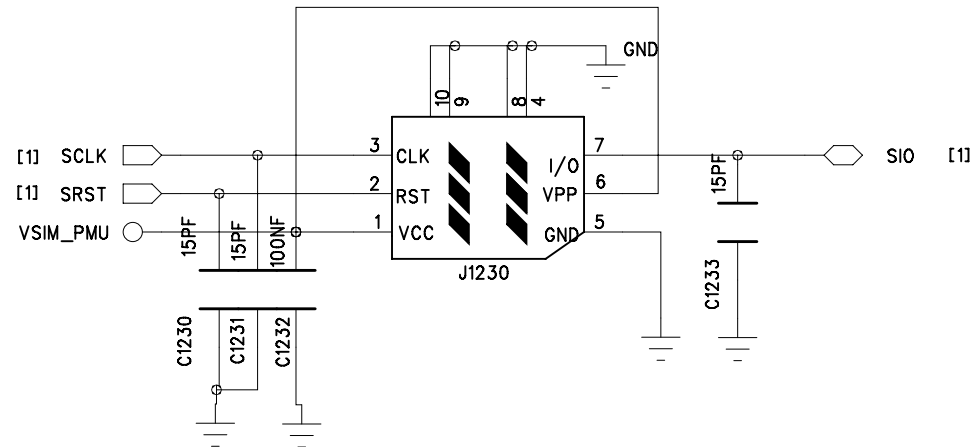
LED



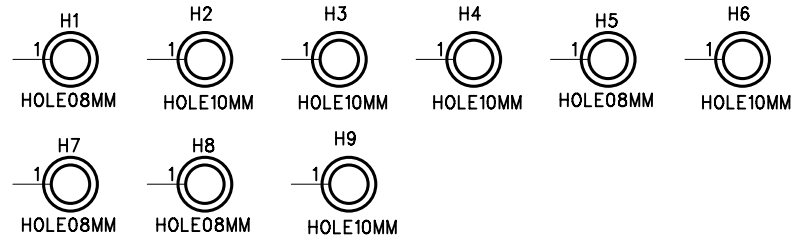
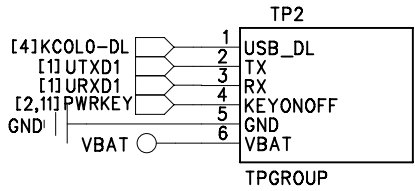
Vol+/- KEY



SIM Card



TEST Points



COMPANY: SIMCOM			
TITLE: Z1			
DRAWN: WangJian	DATED: 2012.1.12	CODE: Code	SIZE: A2
CHECKED: <Checked By>	DATED: <Checked Date>	DRAWING NO: KEY & Sub IO & SIM Card	REV: V1.00
QUALITY CONTROL: <QC By>	DATED: 2010	SCALE: <Scale>	
RELEASED: <Released By>	DATED: 2010.12	SHEET: 12 of 12	